

3 RIVERS RAMBLE & PINE CREEK CRAWLER

Length: 3RR - 50 miles & PCC - 39 miles

Start: Riverside Park

Difficulty: Moderate - 3RR - 3 Climbs; Easy - PCC - 1 Climb at the end of State St., La Crosse, WI

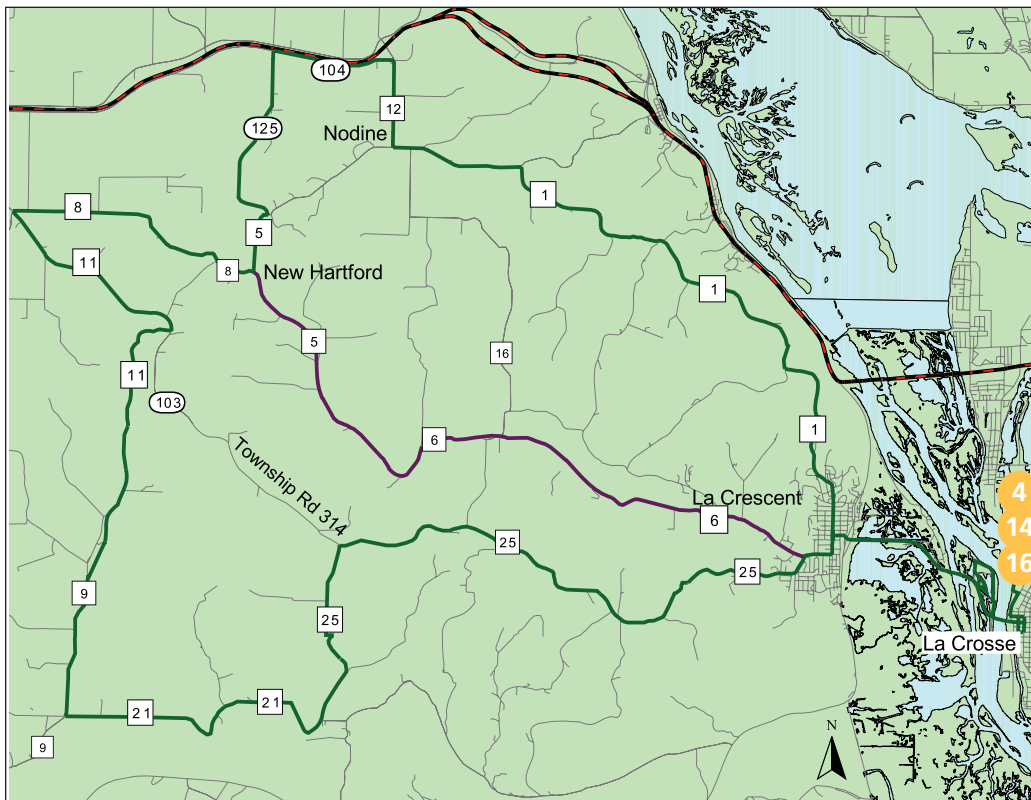


Miles	Turn	Road
		La Crosse (B, BR, BS, CS, R, S, POI) Parking at north end near Gazebo
	South	Veteran's Memorial Dr. toward eagle statue
	L	State St.
0.3	R	Front St.
0.5	L	King St.
0.6	R	3rd St.
0.7	R	Cass St. (WI. Hwy. 16, becomes U.S. 14/61/MN Hwy. 16) Cross Miss River Bridge, stay on sidewalk
1.6	R	Pettibone Park Dr. (base of bridge)
1.8	L	Go north along river, wind thru park
3.4	R	Back onto US 14/61 to La Crescent, MN (CS, BR)
6.0		Go strait through stop-light (becomes Third St.)
6.1	L	Elm St.
6.3	R	7th St. (Houston Cty. 6)

Miles	Turn	Road
		Pine Creek Crawler
6.7	R	Houston Cty. 6 becomes Winona Cty. 5 for 10.5 miles.
17.2	R	Winona Cty. 5 Reconnect with TRR route
		3 Rivers Ramble
6.7	L	Houston Cty. 25
17.5	R	Houston Cty. 21 - Hill
21.8	R	Houston Cty. 9 becomes Winona Cty. 11- Hill
28.1	L	Winona Cty. 11 (at top of 2nd hill)
31.2	R	Winona Cty. 8 (St. Pat's Cemetery)
		3RR & PCC Merge
35.0	17.2 L	Winona Cty. 5
35.9	18.1 L	Winona Cty. 125 - Hill (if you stay on Winona Cty. 5 you can cut off a few miles but you miss the truck stop and you still get to climb a hill!)

Miles	Turn	Road
38.6	20.8 R	Winona Cty. 104
40.3	22.5 R	Winona Cty. 12
		Nodine (CS, BR)
41.5	23.7 L	Winona Cty. 12 (3-way stop in Nodine Apple Blossom Scenic Dr.)
43.4	25.6 R	Winona Cty. 1 becomes Houston Cty. 29 at bottom of hill
52.0	34.2 L	Elm St.
56.0	38.2	La Crescent, MN (CS, BR) To Cass St. Bridge, take 8' sidewalk on south bridge, At bottom of bridge
56.1	38.3 R	Division St.
56.2	38.4 R	Second St.
56.3	38.5 R	Second St.
56.5	38.7 L	King St.
56.6	38.8 R	Front St.
56.8	39.0 L	State St.
56.9	39.1 R	Veteran's Memorial Dr. to Gazebo

THREE RIVERS RAMBLE



© 2008, Gathering Waters Design, Inc.

LINDY'S SUBS & SALADS

The perfect place to grab a bite to eat. With fresh ingredients, great selection and unbelievable prices, Lindy's is one of the best restaurants in La Crosse!

- Subs • Salads • Wraps •
- Soups • Group Orders •
- Box Lunch Combo •

221 Main Street (Downtown)
La Crosse, WI 54601
608-785-7200 • Fax: 608-782-7335

304 Sand lake Road
Onalaska, WI 54650
608-783-SUBS • Fax: 608-783-5168

www.LindysSubsAndSalads.com